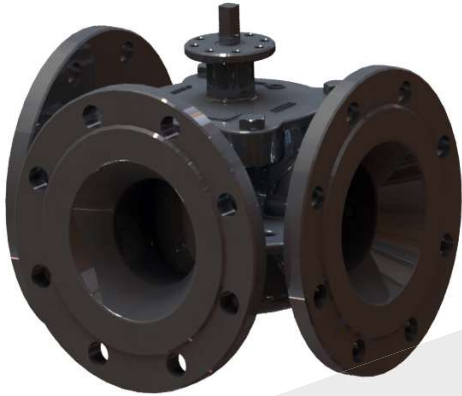


3-way Control Valve type G3FMT-SLM (Middle)

Nodular cast iron, PN10, DN100 - 250 mm

O-2.6.18-A

Page 1 of 4



APPLICATIONS

Control valve type G3FMT-SLM is a three-way control valve with a slide for quarter turn operation designed for regulating of fresh water, lubricating oil and other liquid media. The valves are designed for use in conjunction with industrial processes, district heating and marine installations with large water or lubricating oil volumes:

- Engine Jacket Cooling Water System
- Lubricating Oil Cooling
- Central Cooling Water System, etc.

The valves are designed for use in conjunction with valve motor type CAR with handle for manual operation or for use in conjunction with a pneumatic actuator type VT.

DESIGN

The valve body and the valve slide are made of nodular cast iron. The valve flanges are drilled according to EN 1092-2 - option JIS B 2210 5K/10k and ANSI class 150.

FUNCTION

The slide is firmly connected with the motor spindle. When the slide is in the one outer position by turning the spindle, connection A-AB is fully open and connection B-AB is fully closed. In the other outer position connection A-AB is fully closed and connection B-AB is fully open. In the intermediate positions the opening degrees change proportionally. The valve has a small tolerance between body and slide.

This section to be read together with sketches page 2 this data sheet.

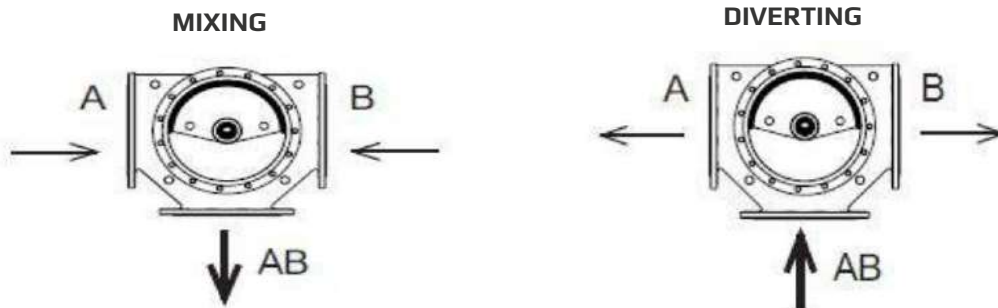
TECHNICAL DATA

Materials:	
- Valve body, slide	Nodular cast iron EN-GJS-400-15
- Sealing element and O-ring	Silicone/PTFE
Flow characteristic	Almost linear
Leakage rate	ANSI class I
Flanges	EN 1092-2 PN 10
- Option	JIS B 2210 5K/10K ANSI class 150
Max. pressure Δp, against which the valve can close	5 bar
Nominal pressure	PN 10
Design temperature	120°C

FEATURES

- Simple design secures reliable controls and reduces costly downtime
- Most compact valve on the market
- Full flexibility on port orientation

Subject to change without notice.

PORT NUMBERING: AB-MIDDLE**MOUNTING**

The valve connections are marked A, B and AB. The slide is operating between A and B. Check slide position before installation in the pipe. The slide position is marked on the top of the shaft. The valves can be installed with vertical as well as horizontal spindles. The valves must be mounted in a way that the valve actuator will be exposed to a minimum of moisture and unnecessary vibrations.

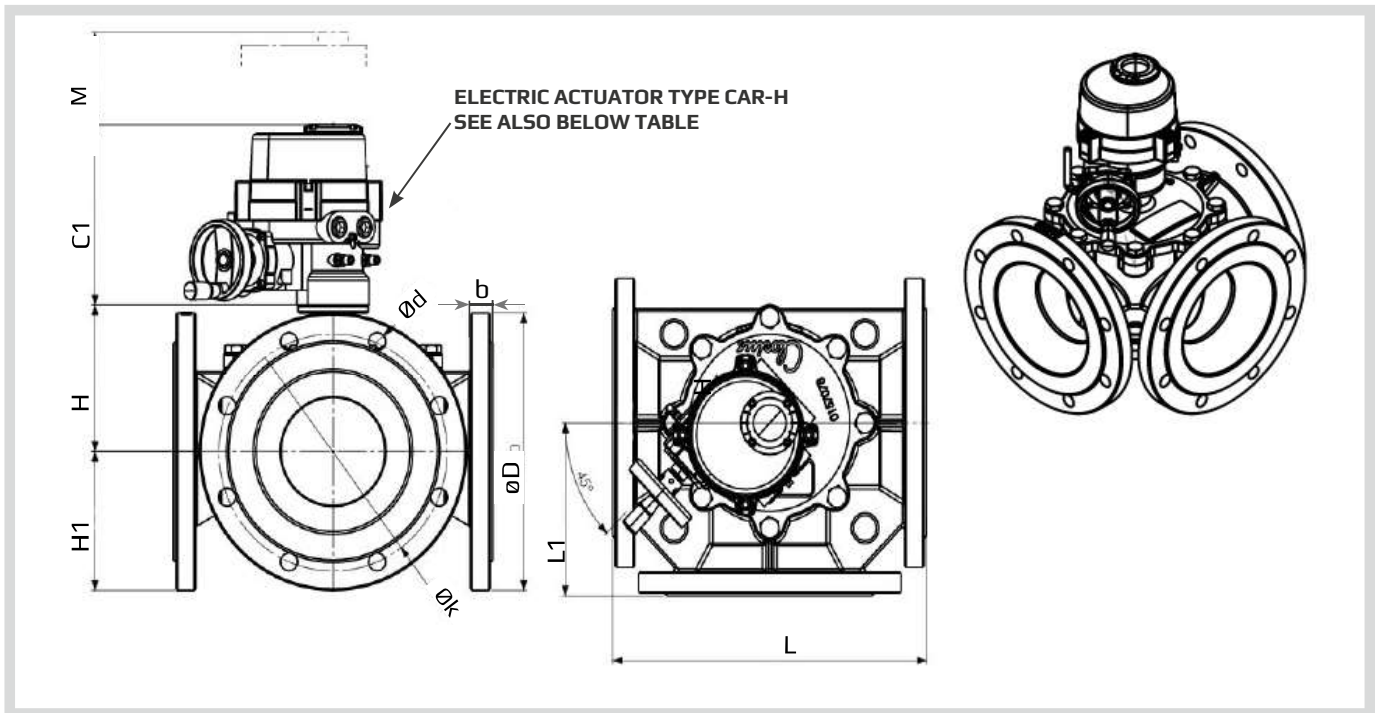
3-way Control Valve type G3FMT-SLM (Middle)

Nodular cast iron, PN10, DN80 - 250 mm

0-2.6.18-A

Page 3 of 4

DIMENSION SKETCH



SPECIFICATIONS - TABLE 1 (read this together with table on page 4)

Type	L (mm)	L1 (mm)	H (mm)	H1 (mm)	b (mm)	C1 (mm)	M (mm)	Electric Actuator Type CAR-H
100 G3FMT-SLM (*HF)	296	148	140	ØD/2	24	223	110	CAR-H 006
125 G3FMT-SLM	330	165	140	ØD/2	24	223	110	CAR-H 006
125 G3FMT-SLM (JIS5K)	320	160	140	ØD/2	19	223	110	CAR-H 006
150 G3FMT-SLM	356	178	149	ØD/2	25,4	223	110	CAR-H 006
200 G3FMT-SLM	410	205	182	ØD/2	28,4	223	110	CAR-H 010
200 G3FMT-SLM (**L)	484	242	182	ØD/2	28,4	223	110	CAR-H -010
250 G3FMT-SLM	480	240	202	ØD/2	31	223	110	CAR-H -010

* High Flow

** Long Version

*** Reduced Flow

ØD/2 - Depends on flange type (see also table 2)

Subject to change without notice.

SPECIFICATIONS - TABLE 2

Flange connections	EN 1092-2			ANSI Class 150			JIS B 2210 5K			JIS B 2210 10K		
	D (dia.) (mm)	k (dia.) (mm)	d mm dia. (number)	D (dia.) (mm)	k (dia.) (mm)	d mm dia. (number)	D (dia.) (mm)	k (dia.) (mm)	d mm dia. (number)	D (dia.) (mm)	k (dia.) (mm)	d mm dia. (number)
DN100	220	180	19x(8)	230	191	19x(8)	200	165	19x(8)	210	175	19x(8)
DN125	250	210	19x(8)	255	216	22x(8)	235	200	19x(8)	250	210	23x(8)
DN150	285	240	23x(8)	280	241	22x(8)	265	230	19x(8)	280	240	23x(8)
DN200	343	295	22x(8)	343	298	22x(8)	320	280	23x(8)	330	290	23x(12)
DN250	405	350	23x(12)	405	362	25x(12)	385	345	23x(12)	400	355	25x(12)

SPECIFICATIONS - TABLE 3

Type	Flange connection DN in mm	KvS m ³ /h	Torque Nm For inlet P	Weight kg
DN100 (*HF)	100	179	40	27
DN125	125	179	40	36
DN150	150	310	45	44,5
DN200	200	550	90	71
DN250	250	830	115	102

Torque calculated at max ΔP for: DN100 - 250 - 5 Bar

NOTE: DN300/350/400 ARE AVAILABE ON REQUEST