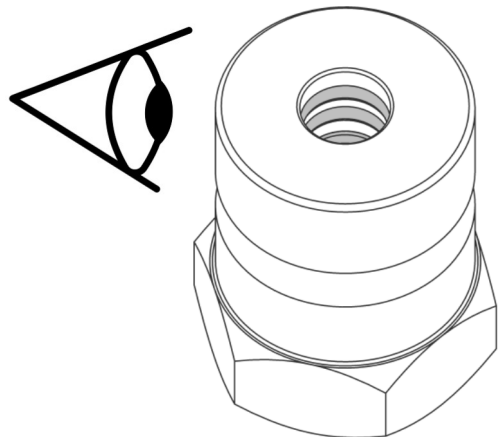
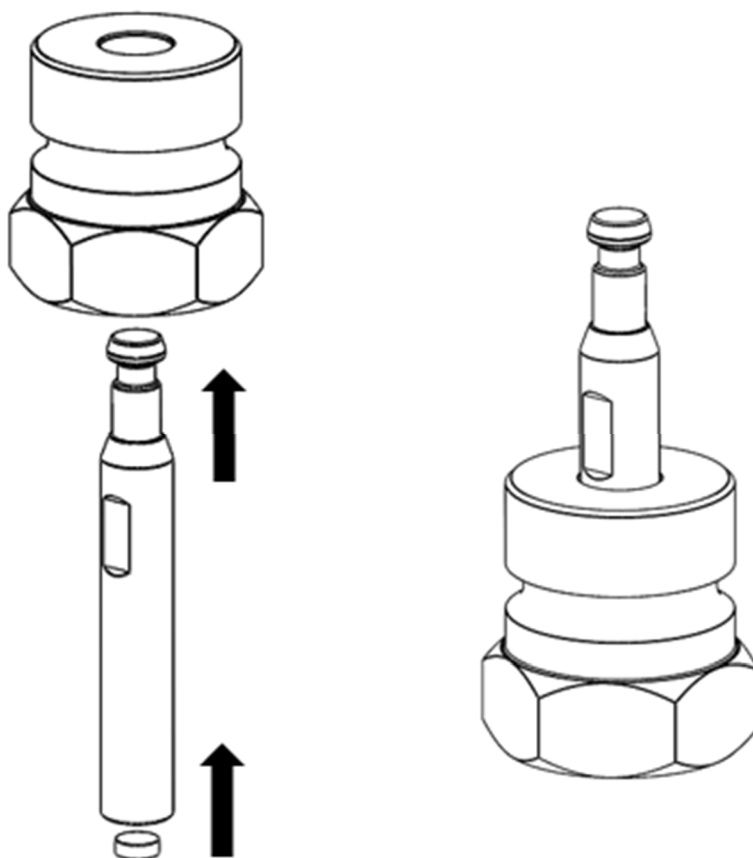


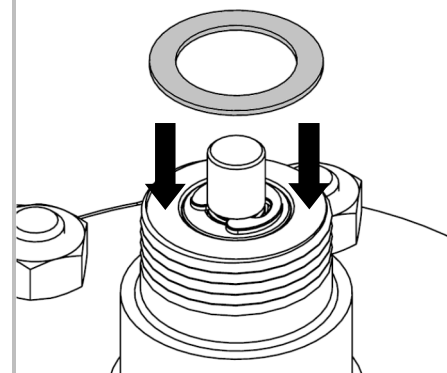
1.1 Check that the three circumference sealings (two o-rings and u-ring) inside the large adaptor nut are present.



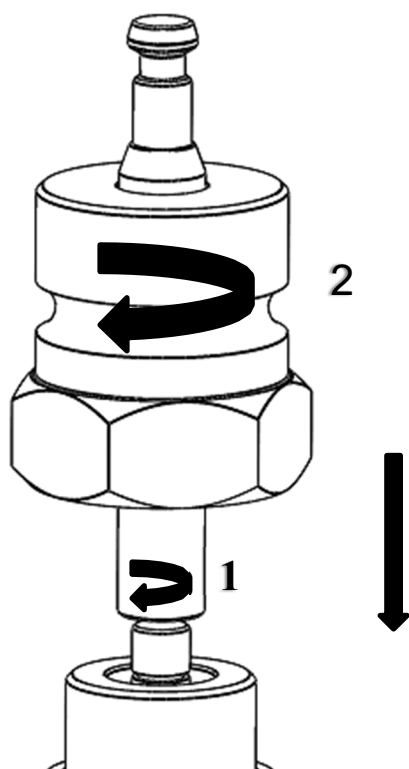
1.2 Place the adaptor spindle inside the adaptor nut and adaptor flat washer inside the spindle.



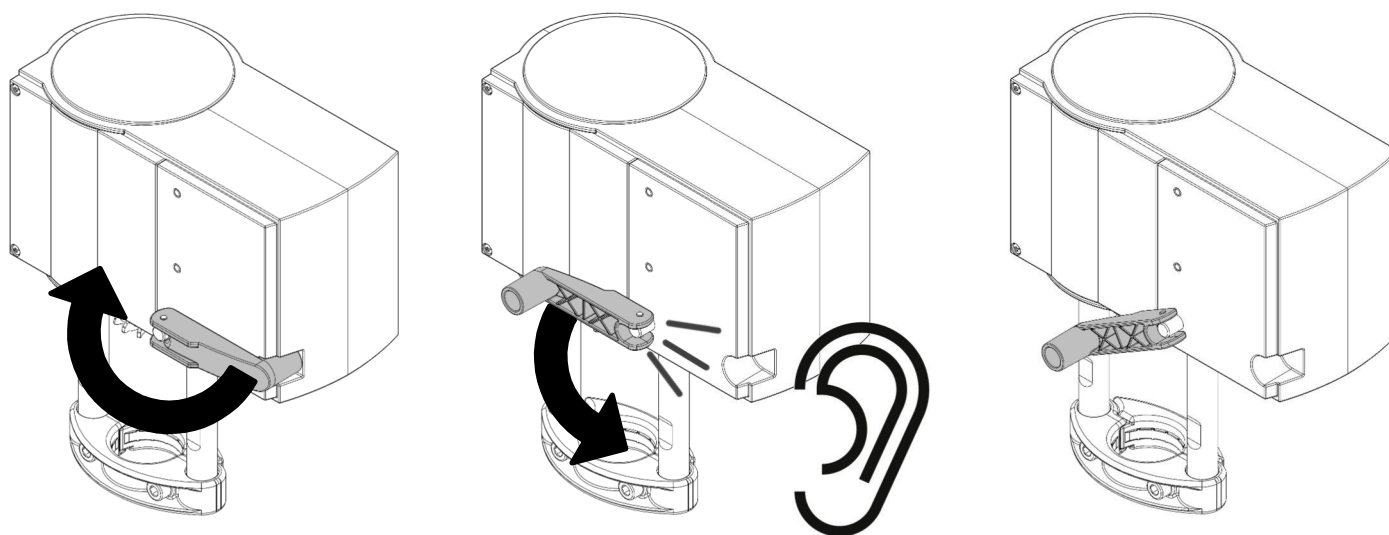
1.3 Place the flat sealing (PTFE disc) on the top of the valve around the valve stem.



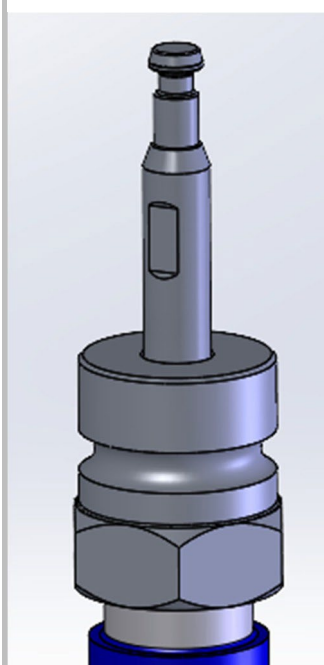
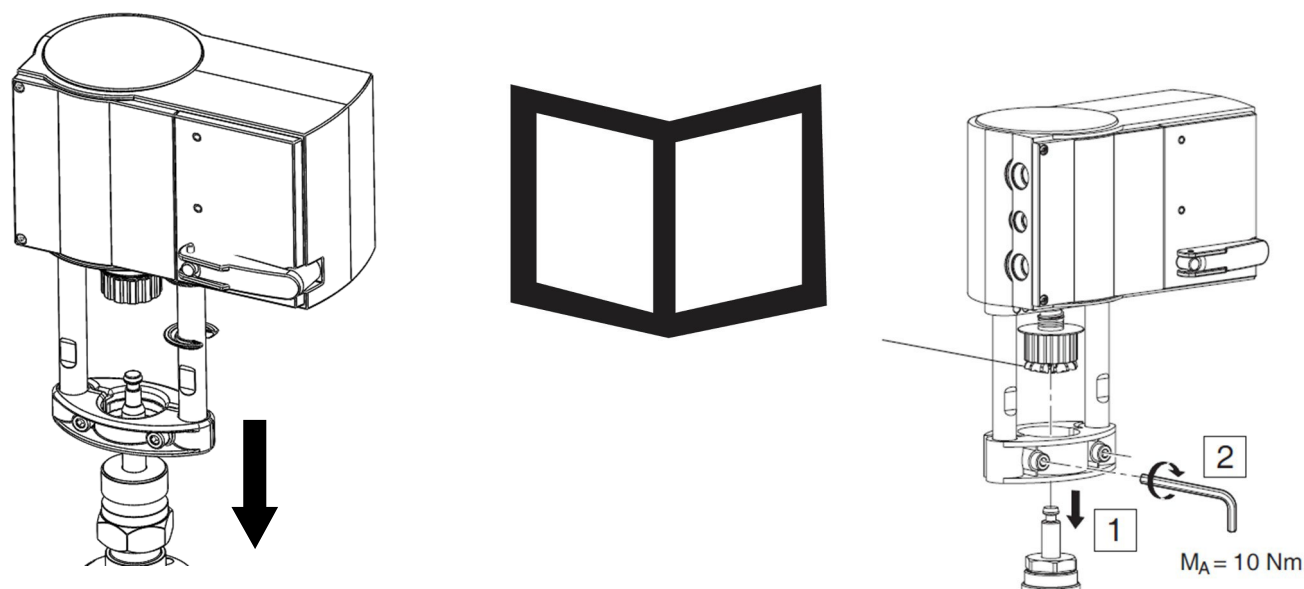
1.4 Screw the adaptor spindle onto the valve cone "1" then the adaptor nut "2" onto the valve, use a 13 and 36mm spanner to tighten it with a torque of 30Nm.



1.5 Before mounting the actuator, make sure that the actuator spindle is retracted as much as possible, however be sure not to use excessive force. Flip the handle to activate it, then slowly turn it counter-clockwise until you hear a loud click indicating that the actuator spindle is fully retracted. Continue to turn the handle slowly counter-clockwise (while the clicks continue) until it reaches the initial position, then flip it back in place to deactivate it.



1.6 Depending on temperature – in case of high temperature – use instruction for 1-0152285 before mounting actuator!
Mount the actuator according to step 1-2.3 of the installation instruction for the actuator. Do not yet power up the actuator! Screw the actuator spindle onto the valve adaptor use a 6 mm key



1.7

When the actuator is placed onto the valve correctly and the actuator electrical connected / based on actuator wiring diagram/ the actuator is ready to initialization. Connection the actuator spindle with adaptor spindle is proceeded by manually ore automatically.

Automatic

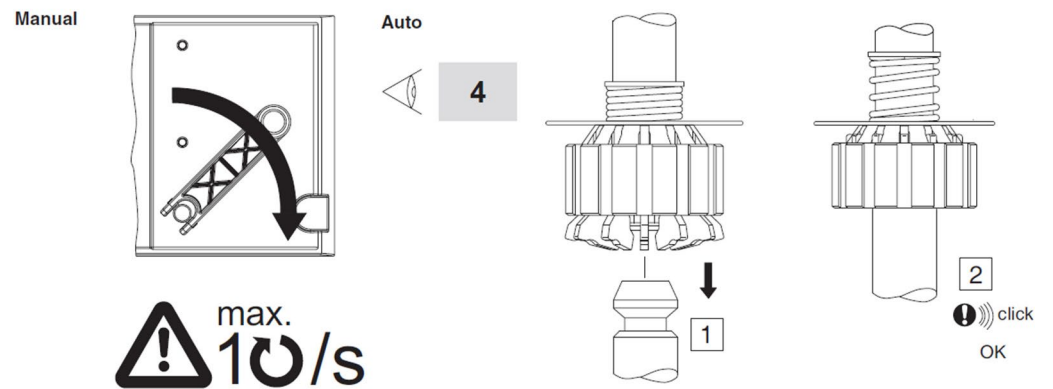
When power is applied to the regulating unit for the first time, the automatic coupling with the valve and an initialisation take place. During this process, both LEDs on the drive flash in red.

1. The spindle extends until it reaches the mechanical stop on the regulating unit (valve is fully open).
2. From this position, the spindle retracts until it reaches the mechanical stop on the regulating unit (valve is closed).
3. Initialisation is complete. The regulating unit moves to the position dictated by the control signal.

Manual

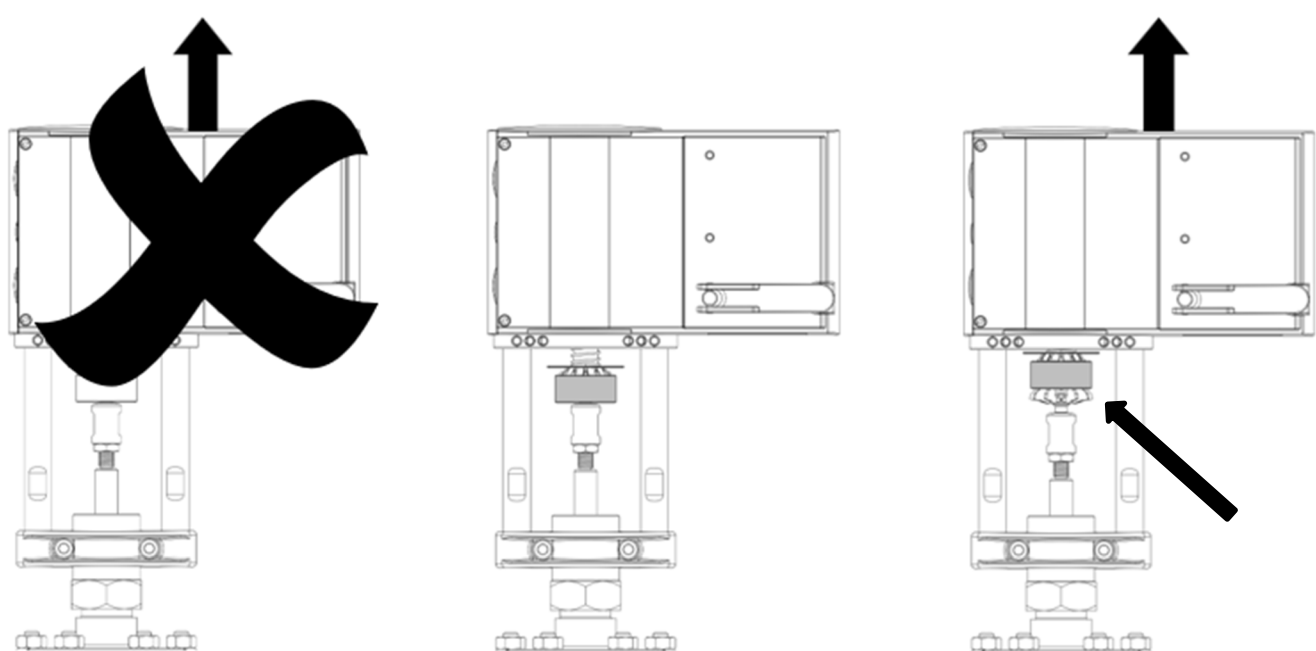
If required, initialisation can always be triggered manually.

- Fold out and fold back the crank handle twice within 4 seconds (see diagram). Initialisation begins.
- The initialisation can be aborted by folding out the crank handle again.



1.8

Before demounting the actuator, please release the actuator's grip on the adaptor spindle!



1.9

Before demounting the adaptor, it is important to firstly close-off the inlet and secondly the outlet to the valve!!!

