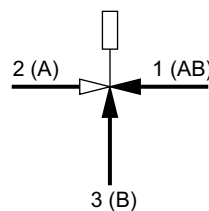


Trevejsventil

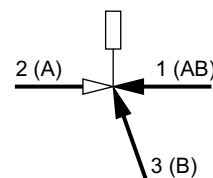
Three-way valve

Dreiwegeventil

L3S DN 15-20



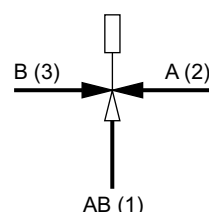
L3S DN 25-50



M3F DN 25-65

G3F DN 25-50

H3F DN 25-50



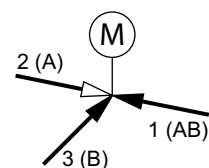
M3F DN 80-150

M3FM DN 80-300

G3FM DN 100-300

L3F DN 65-150

L3FM DN 200-300



DK	V-Thermostat eller motor med normal omdrejningsretning	Motor med modsat omdrejningsretning
Port nr. 1 (AB)	altid åben	altid åben
Port nr. 2 (A)	Lukker ved stigende temperatur	Åbner ved stigende temperatur
Port nr. 3 (B)	Åbner ved stigende temperatur	Lukker ved stigende temperatur
GB	V-Thermostat or motor with normal direction of rotation	Motor with opposite direction of rotation
Port No. 1 (AB)	Always open	Always open
Port No. 2 (A)	Closes with rising temperature	Opens with rising temperature
Port No. 3 (B)	Opens with rising temperature	Closes with rising temperature
D	V-Thermostat oder Motor mit normaler Umdrehungsrichtung	Motor mit entgegengesetzter Umdrehungsrichtung
Port Nr. 1 (AB)	Immer offen	Immer offen
Port Nr. 2 (A)	Schliesst bei steigender Temperatur	Öffnet bei steigender Temperatur
Port Nr. 3 (B)	Öffnet bei steigender Temperatur	Schliesst bei steigender Temperatur