

Declutchable Wormgear Manual Override

Double Acting. For Pneumatic Actuators type VT

0-6.5.17

Page 1 of 2



APPLICATIONS

The Declutchable Wormgear Manual Override is issued with pneumatic actuators type VT and is the main component of the automatic control system. It is mainly used manually for a rotary angle of 90° to open and close the rotary Clorius valves. It can also be used for other automatic control mechanical products, which need to be manually driven.

FEATURES

- Small size, light weight, reasonable design, novel style.
- Product serialisation, the output torque parameters are easily matched with pneumatic actuators and a variety of valves.
- KH series connection in line with ISO 5211 connection standards, the upper bulge for the tenon, the lower part is the square hole.
- Lift the limit pin, rotate the eccentric device limit of 180 or 90° limit automatically to achieve pneumatic drive; operate in reverse way to achieve manual drive.
- Products are applied with special grease such that after assembly with valve and pneumatic actuator, it will secure overall seal, dustproof and waterproof, the protection class in IP65.

TECHNICAL DATA

Materials:

Case	Aluminum alloy/Ductile iron
Bracket cover	Aluminum alloy/ Ductile iron
Turbine	Ductile iron
Connecting shaft	Carbon steel
Eccentric sets	Carbon steel
Bearing components	Bearing steel
Vortex rod	Carbon steel
Handle	Carbon steel
Limit assembly	Carbon steel/ Stainless steel
Set screws	Carbon steel
Hand wheel	Carbon steel
Scroll shaft	Carbon steel chrome
Cylindrical pin hand wheel	Carbon steel
Cylindrical pin hand turbine	Carbon steel
Adjustment bolts	Stainless steel
Nuts	Stainless steel
Bolts	Stainless steel

RECOMMENDED DECLUTCH TYPES FOR PNEUMATIC ACTUATORS DOUBLE ACTING AND CLORIUS ROTARY VALVES

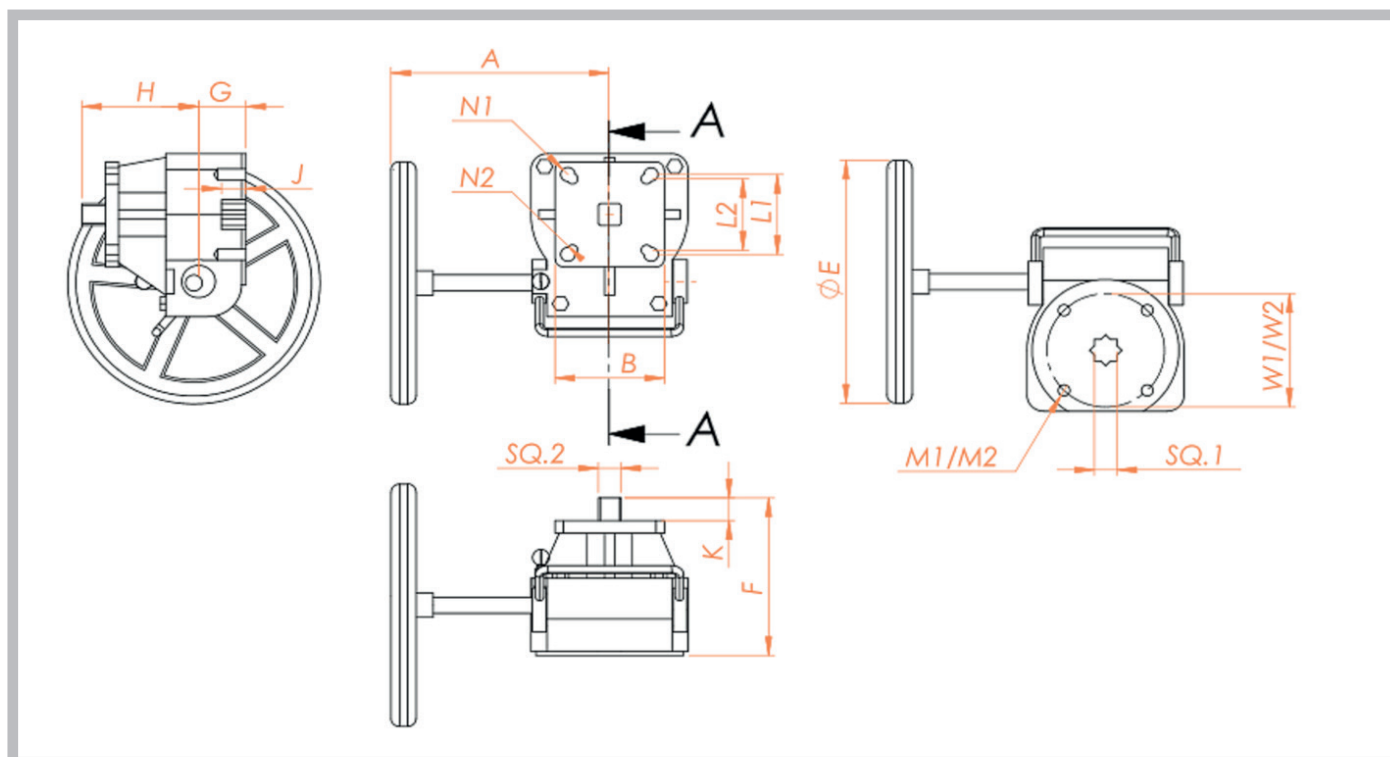
DN	Type	Drop pressure (P1≤ ...bar)	Pneumatic Actuator for DP 5 bar	DECLUTCH
65	G3FM-T	25	VT085D	KH-1
65	G3FM-TM	25	VT095D	KH-2
80	G3FM-T	25	VT095D	KH-2
80	G3FM-TM	25	VT095D	KH-2
100	G3FM-T	25	VT110D	KH-2
100	G3FM-TM	25	VT125D	KH-3
125	G3FM-T	25	VT125D	KH-3
125	G3FM-TM	25	VT140D	KH-3
150	G3FM-T	16	VT125D	KH-3
150	G3FM-TM	16	VT140D	KH-3
200	G3FM-T	16	VT160D	KH-4
200	G3FM-TM	16	VT190D	KH-4
250	G3FM-T	16	VT190D	KH-4
250	G3FM-TM	16	VT210D	KH-5
300	G3FM-T	16	VT210D	KH-5
300	G3FM-TM	16	VT240D	KH-5
350	G3FM-T	10	VT240D	KH-5
350	G3FM-TM	10	VT240D	KH-5
400	G3FM-T	10	VT240D	KH-5
400	G3FM-TM	10	VT270D	KH-6
450	G3FM-T	10	VT270D	KH-6
450	G3FM-TM	10	VT300D	KH-6
500	G3FM-T	10	VT270D	KH-6
500	G3FM-TM	10	Available on request	
600	G3FM-T	10	VT350D	KH-7
600	G3FM-TM	10	Available on request	

Subject to change without notice.

Other relevant data sheets for KH declutch:

- Pneumatic Actuators type VT Double Acting 0-6.5.16
- Pneumatic Actuators type VT Single Acting Spring Open 0-6.5.15
- Pneumatic Actuators type VT Single Acting Spring Close 0-6.5.15

DIMENSION SKETCH



Type	A	B	E	F	G	H	J	K	M1	M2	W1	W2	SQ.1	N1	N2	L1	L2	SQ.2	Speed ratio	Weight [kg]
KH-2	150	70	Ø180	120	35	85	16	15	M8x4	M6x4	70	50	14	Ø10x4	Ø8x4	70	50	14	26:1	2.6
KH-2	170	95	Ø200	127	40	87	19	19	M10x4	M8x4	102	70	17	Ø12x43	Ø10x4	102	70	17	28:1	4.0
KH-3	200	115	Ø280	150	40	110	24	22	M10x4	M8x4	102	70	22	Ø14x4	Ø12x4	125	102	22	38:1	6.5
KH-4	260	130	Ø300	195	60	135	29	28	M16x4	-	140	-	27	Ø18x4	Ø14x4	140	125	27	54:1	13.0
KH-5	310	155	Ø400	209	55	154	40	39	M20x4	-	165	-	36	Ø22x4	Ø18x4	165	140	36	80:1	32.0
KH-6	370	160	Ø500	233	60	172	50	48	M20x4	-	165	-	46	Ø22x4	-	165	-	46	78:1	43.0
KH-7	435	160	Ø600	233	60	173	50	48	M20x4	-	165	-	46	Ø22x4	-	165	-	46	98:1	65.0
KH-8	440	320	Ø600	252	65	187	58	55	M16x8	-	254	--	55	Ø18x8	-	254	-	55	100:1	115.0
KH-9	391	Ø320	Ø600	302	92	214	65	58	M16x8	-	254	--	55	Ø18x8	-	254	-	55	350:1	125.0

Declutchable Wormgear Manual Override

Single Acting. For Pneumatic Actuators type VT

0-6.5.17

Page 1 of 2



APPLICATIONS

The Declutchable Wormgear Manual Override is issued with pneumatic actuators type VT and is the main component of the automatic control system. It is mainly used manually for a rotary angle of 90° to open and close the rotary Clorius valves. It can also be used for other automatic control mechanical products, which need to be manually driven.

FEATURES

- Small size, light weight, reasonable design, novel style.
- Product serialisation, the output torque parameters are easily matched with pneumatic actuators and a variety of valves.
- KH series connection in line with ISO 5211 connection standards, the upper bulge for the tenon, the lower part is the square hole.
- Lift the limit pin, rotate the eccentric device limit of 180 or 90° limit automatically to achieve pneumatic drive; operate in reverse way to achieve manual drive.
- Products are applied with special grease such that after assembly with valve and pneumatic actuator, it will secure overall seal, dustproof and waterproof, the protection class in IP65.

TECHNICAL DATA

Materials:

Case	Aluminum alloy/Ductile iron
Bracket cover	Aluminum alloy/ Ductile iron
Turbine	Ductile iron
Connecting shaft	Carbon steel
Eccentric sets	Carbon steel
Bearing components	Bearing steel
Vortex rod	Carbon steel
Handle	Carbon steel
Limit assembly	Carbon steel/ Stainless steel
Set screws	Carbon steel
Hand wheel	Carbon steel
Scroll shaft	Carbon steel chrome
Cylindrical pin hand wheel	Carbon steel
Cylindrical pin hand turbine	Carbon steel
Adjustment bolts	Stainless steel
Nuts	Stainless steel
Bolts	Stainless steel

RECOMMENDED DECLUTCH TYPES FOR PNEUMATIC ACTUATORS SINGLE ACTING AND CLORIUS ROTARY VALVES

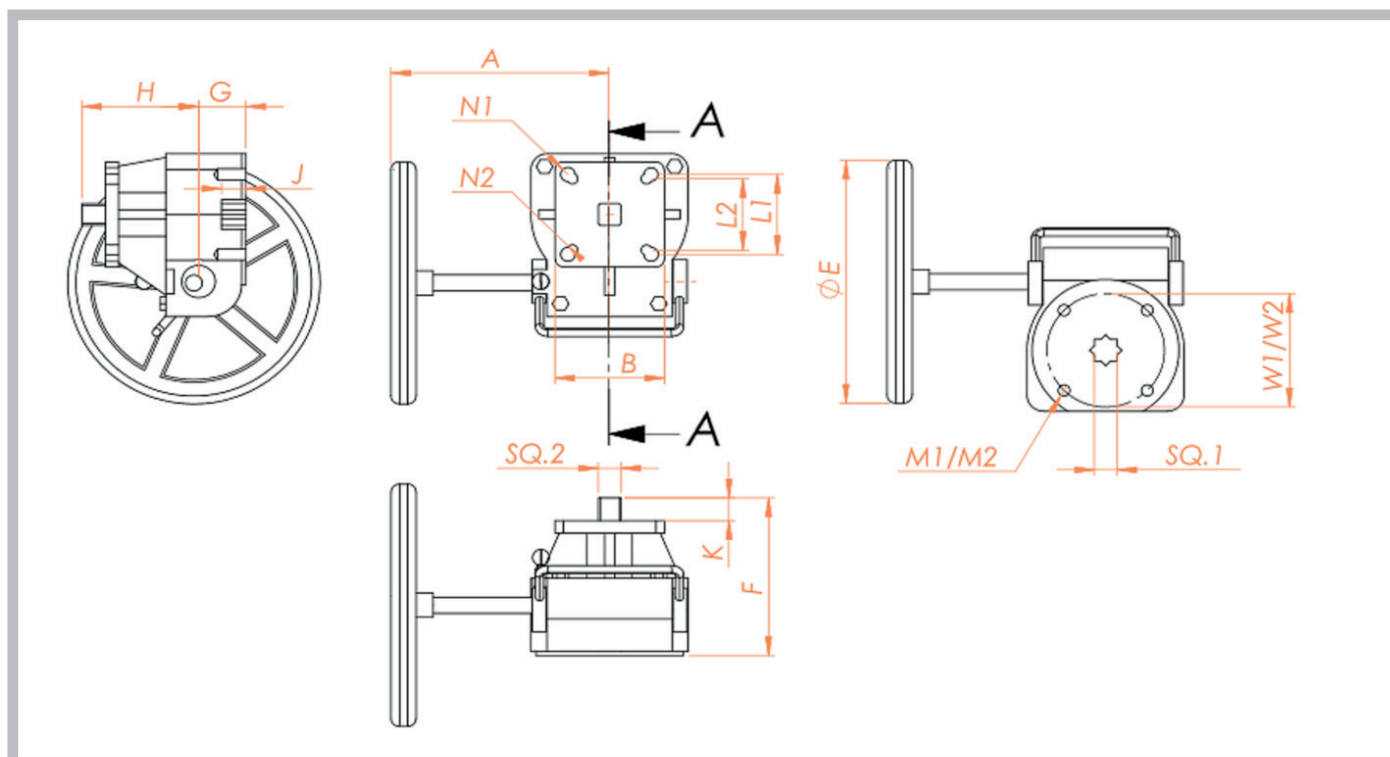
DN	Type	Drop pressure (P1≤ ...bar)	Pneumatic Actuator for DP 5 bar	DECLUTCH
65	G3FM-T	25	VT1255	KH-3
65	G3FM-TM	25	VT1255	KH-3
80	G3FM-T	25	VT1255	KH-3
80	G3FM-TM	25	VT1405	KH-4
100	G3FM-T	25	VT1605	KH-4
100	G3FM-TM	25	VT1605	KH-4
125	G3FM-T	25	VT1905	KH-5
125	G3FM-TM	25	VT1905	KH-5
150	G3FM-T	16	VT1905	KH-5
150	G3FM-TM	16	VT1905	KH-5
200	G3FM-T	16	VT2105	KH-5
200	G3FM-TM	16	VT2405	KH-6
250	G3FM-T	16	VT2405	KH-6
250	G3FM-TM	16	VT2705	KH-6
300	G3FM-T	16	VT2705	KH-6
300	G3FM-TM	16	VT3005	KH-7
350	G3FM-T	10	VT3005	KH-7
350	G3FM-TM	10	VT3505	KH-8
400	G3FM-T	10	VT3505	KH-8
400	G3FM-TM	10	VT4005	KH-9
450	G3FM-T	10	VT4005	KH-9
450	G3FM-TM	10	VT4005	KH-9
500	G3FM-T	10	VT4005	KH-9
500	G3FM-TM	10	Available on request	
600	G3FM-T	10	Available on request	
600	G3FM-TM	10	Available on request	

Subject to change without notice.

Other relevant data sheets for KH declutch:

- Pneumatic Actuators type VT Double Acting 0-6.5.16
- Pneumatic Actuators type VT Single Acting Spring Open 0-6.5.15
- Pneumatic Actuators type VT Single Acting Spring Close 0-6.5.15

DIMENSION SKETCH



Type	A	B	E	F	G	H	J	K	M1	M2	W1	W2	SQ.1	N1	N2	L1	L2	SQ.2	Speed ratio	Weight [kg]
KH-2	150	70	Ø180	120	35	85	16	15	M8x4	M6x4	70	50	14	Ø10x4	Ø8x4	70	50	14	26:1	2.6
KH-2	170	95	Ø200	127	40	87	19	19	M10x4	M8x4	102	70	17	Ø12x43	Ø10x4	102	70	17	28:1	4.0
KH-3	200	115	Ø280	150	40	110	24	22	M10x4	M8x4	102	70	22	Ø14x4	Ø12x4	125	102	22	38:1	6.5
KH-4	260	130	Ø300	195	60	135	29	28	M16x4	-	140	-	27	Ø18x4	Ø14x4	140	125	27	54:1	13.0
KH-5	310	155	Ø400	209	55	154	40	39	M20x4	-	165	-	36	Ø22x4	Ø18x4	165	140	36	80:1	32.0
KH-6	370	160	Ø500	233	60	172	50	48	M20x4	-	165	-	46	Ø22x4	-	165	-	46	78:1	43.0
KH-7	435	160	Ø600	233	60	173	50	48	M20x4	-	165	-	46	Ø22x4	-	165	-	46	98:1	65.0
KH-8	440	320	Ø600	252	65	187	58	55	M16x8	-	254	--	55	Ø18x8	-	254	-	55	100:1	115.0
KH-9	391	Ø320	Ø600	302	92	214	65	58	M16x8	-	254	--	55	Ø18x8	-	254	-	55	350:1	125.0